

# Seboreductyl

## INCI name

Water, Butylene Glycol, Hydrolyzed Yeast Protein, Fomes Officinalis (Mushroom) Extract, Pyridoxine, Niacinamide, Panthenol, Allantoin, Threonine, Biotin

## Description

SEBOREDUCTYL is a biological complex for the treatment of oily skins and hairs.

SEBOREDUCTYL is prepared by the extraction and purification of yeast and mushroom ameliorated with vitamin B complex and soothing agents.

Main components

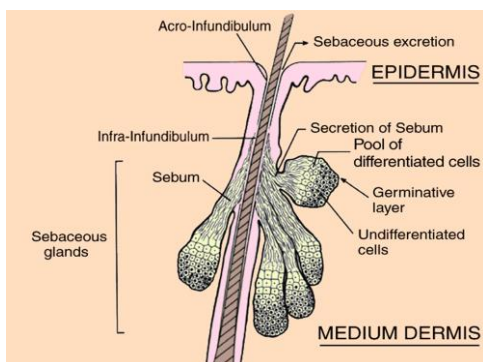
- **SULFOPEPTIDES & AMINOACIDS:** To modulate the sebaceous secretion.
- **FOMES OFFICINALIS:** It provides an astringent effect, reduces the size of the pore and supplies hydration to the skin.
- **VITAMINS FROM GROUP B:** (pyridoxine, niacinamide, biotin). To inhibit the lipogenesis.
- **ALLANTOIN:** For hydration, smoothing and calming.



*Fomes officinalis*

SEBOREDUCTYL does not contain any synthetic detergent, or pyrithionic derivatives or Zinc salts.

## Mechanism of action:



The sebaceous glands are located at the medium dermis and are made up from cells full of lipids. These glands carry out the work of synthesising sebum, a lipidic substance which function is to lubricate and protect the skin surface

The sebaceous secretion cycle varies along our life. There is more sebum produced during the first months after birth. During childhood it is maintained constant at a low rate and it is rapidly increased at teenagers (puberty). After the age of 50, there is a decrease at the sebum production, except on

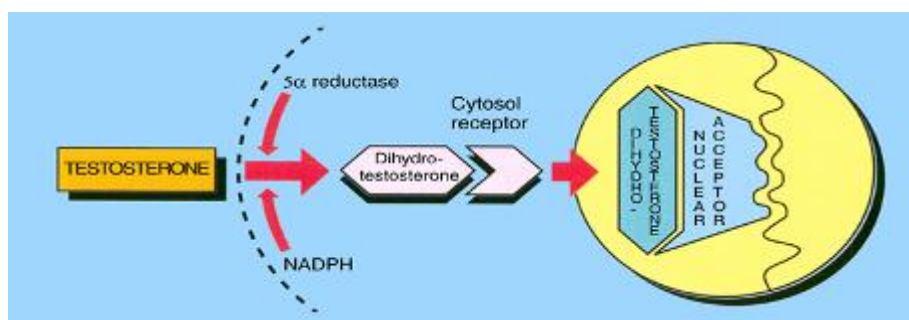
women right before menopause, where there is another pick at its secretion.

The activity of the sebaceous gland is modulated by psychological, nervous and neuro-vegetatives facts, and also it is influenced by heritage. It is also affected by the style of life (stress, pollution, food...)

The sebum production is modulated, basically, by sexual androgens. They become active at the level of sebaceous glands under the influence of enzymes. The enzyme 5 $\alpha$ -reductase is the one

# Seboeductyl

in charge of transforming the testosterone into dehydrotestosterone, as soon as it enters at the sebaceous cell. The increase of sebaceous secretion is linked to a higher sensitivity of the sebaceous gland to androgenic hormones.



## Effects in Cosmetic Products

SEBOREDUCTYL is an active ingredient indicated to help modulate and reducing the sebaceous secretion and excretion. It inhibits the **5α-reductase enzyme**, thanks to the action of the group B vitamins. Thanks to the effect of the mushroom *Fomes officinalis*, it can reduce the excessive size of the pore while keeping an optimal moisturization and skin flexibility. The Allantoin and Panthenol would provide a calming effect on the skin, reducing the itchy and scratchy sensations and irritation common at oily skins.

The sebaceous secretion is necessary for our skin. It maintains the skin lubricated and eliminates the cell disposals. The problem comes when there is an alteration of the normal sebaceous secretion. With SEBOREDUCTYL, we can obtain:

- Regularization of the sebum secretion and excretion
- Natural astringent and cleanser. It has a matting effect on skin and scalp.
- Improves the structure and comfort of oily skins
- Anti-irritant effect.
- It helps to improve the hair loss due to excess of sebum.
- It is indicated to treat skins with acne tendency.
- Improves shiny skins with itching problems.

SEBOREDUCTYL can be used at leave-on or rinse-off products with high efficacy. It can be used in tonics, shampoos, creams and lotions, masks, etc.

A very important fact is that SEBOREDUCTYL does not provoke rebounds effects. A lot of astringent products used today in cosmetics can momentarily reduce the sebum secretion. The problem comes when the treatment is stopped, because the skin reaction is to produce more sebum. It is the rebound effect. SEBOREDUCTYL controls the secretion from its origin, avoiding this rebound effect.

# Seboreductyl

## **Dosage – Solubility – Processing**

### A- DOSAGE:

From 5 to 10%. It can be used at higher concentrations at, for example, shock treatments in ampoules.

### B- SOLUBILITY:

Hydro soluble and compatible with alcohol up to 30%. Insoluble in oils.

### C- PROCESSING:

SEBOREDUCTYL is compatible with most of the raw materials normally used in cosmetics, with a pH range of 5 to 7,2. Nevertheless, it is the duty of the formulator to make sure of the stability of the formulae with the necessary tests.

It would be preferably incorporated into cosmetic preparations during the finishing process, at the cooling phase at around 50 °C

## **Analytical Data**

- APPEARANCE: Transparent liquid, amber colored.
- pH: 5,50 – 6,50
- Dry extract: 7,50 – 11,50 %
- Density (at 20 °C): 1,022 – 1,032
- Refractive index (at 20 °C): 1,348 – 1,358
- Free Amino Nitrogen: 0,03 – 0,10%
  
- PRESERVATIVES: EC & USA approved. PARABEN FREE
- MICROBIOLOGY: Maximum 50 CFU/gram (not pathogenic)
- TOLERANCE: Excellent
- STORAGE: Store at room temperature (15 to 25 °C), dry and away from light.

If original container is opened, to avoid secondary microbiological contamination handle with special care and keep refrigerated.